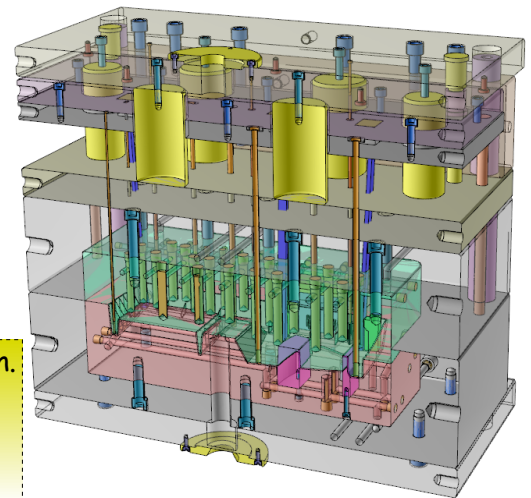


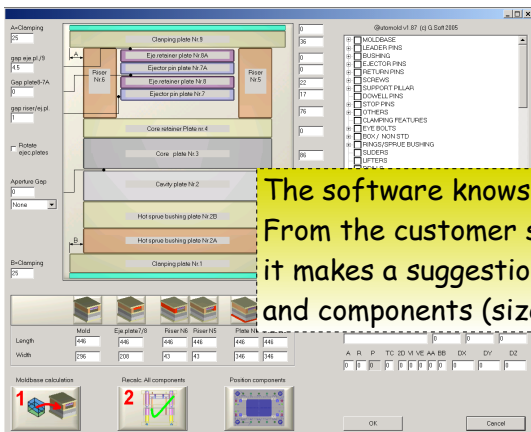
Multi-language bill of materials

Item	Description	Quantity	Unit	Material	Other
1	MOLD BASE	1	mm	ALUMINUM 7050	
2	COUPLER PLATE	1	mm	ALUMINUM 7050	
3	COUPLER PLATE	1	mm	ALUMINUM 7050	
4	COUPLER PLATE	1	mm	ALUMINUM 7050	
5	COUPLER PLATE	1	mm	ALUMINUM 7050	
6	COUPLER PLATE	1	mm	ALUMINUM 7050	
7	COUPLER PLATE	1	mm	ALUMINUM 7050	
8	COUPLER PLATE	1	mm	ALUMINUM 7050	
9	COUPLER PLATE	1	mm	ALUMINUM 7050	
10	COUPLER PLATE	1	mm	ALUMINUM 7050	
11	COUPLER PLATE	1	mm	ALUMINUM 7050	
12	COUPLER PLATE	1	mm	ALUMINUM 7050	
13	COUPLER PLATE	1	mm	ALUMINUM 7050	
14	COUPLER PLATE	1	mm	ALUMINUM 7050	
15	COUPLER PLATE	1	mm	ALUMINUM 7050	
16	COUPLER PLATE	1	mm	ALUMINUM 7050	
17	COUPLER PLATE	1	mm	ALUMINUM 7050	
18	COUPLER PLATE	1	mm	ALUMINUM 7050	
19	COUPLER PLATE	1	mm	ALUMINUM 7050	
20	COUPLER PLATE	1	mm	ALUMINUM 7050	
21	COUPLER PLATE	1	mm	ALUMINUM 7050	
22	COUPLER PLATE	1	mm	ALUMINUM 7050	
23	COUPLER PLATE	1	mm	ALUMINUM 7050	
24	COUPLER PLATE	1	mm	ALUMINUM 7050	
25	COUPLER PLATE	1	mm	ALUMINUM 7050	
26	COUPLER PLATE	1	mm	ALUMINUM 7050	
27	COUPLER PLATE	1	mm	ALUMINUM 7050	
28	COUPLER PLATE	1	mm	ALUMINUM 7050	
29	COUPLER PLATE	1	mm	ALUMINUM 7050	
30	COUPLER PLATE	1	mm	ALUMINUM 7050	
31	COUPLER PLATE	1	mm	ALUMINUM 7050	
32	COUPLER PLATE	1	mm	ALUMINUM 7050	
33	COUPLER PLATE	1	mm	ALUMINUM 7050	
34	COUPLER PLATE	1	mm	ALUMINUM 7050	
35	COUPLER PLATE	1	mm	ALUMINUM 7050	
36	COUPLER PLATE	1	mm	ALUMINUM 7050	
37	COUPLER PLATE	1	mm	ALUMINUM 7050	
38	COUPLER PLATE	1	mm	ALUMINUM 7050	
39	COUPLER PLATE	1	mm	ALUMINUM 7050	
40	COUPLER PLATE	1	mm	ALUMINUM 7050	
41	COUPLER PLATE	1	mm	ALUMINUM 7050	
42	COUPLER PLATE	1	mm	ALUMINUM 7050	
43	COUPLER PLATE	1	mm	ALUMINUM 7050	
44	COUPLER PLATE	1	mm	ALUMINUM 7050	
45	COUPLER PLATE	1	mm	ALUMINUM 7050	
46	COUPLER PLATE	1	mm	ALUMINUM 7050	
47	COUPLER PLATE	1	mm	ALUMINUM 7050	
48	COUPLER PLATE	1	mm	ALUMINUM 7050	
49	COUPLER PLATE	1	mm	ALUMINUM 7050	
50	COUPLER PLATE	1	mm	ALUMINUM 7050	
51	COUPLER PLATE	1	mm	ALUMINUM 7050	
52	COUPLER PLATE	1	mm	ALUMINUM 7050	
53	COUPLER PLATE	1	mm	ALUMINUM 7050	
54	COUPLER PLATE	1	mm	ALUMINUM 7050	
55	COUPLER PLATE	1	mm	ALUMINUM 7050	
56	COUPLER PLATE	1	mm	ALUMINUM 7050	
57	COUPLER PLATE	1	mm	ALUMINUM 7050	
58	COUPLER PLATE	1	mm	ALUMINUM 7050	
59	COUPLER PLATE	1	mm	ALUMINUM 7050	
60	COUPLER PLATE	1	mm	ALUMINUM 7050	
61	COUPLER PLATE	1	mm	ALUMINUM 7050	
62	COUPLER PLATE	1	mm	ALUMINUM 7050	
63	COUPLER PLATE	1	mm	ALUMINUM 7050	
64	COUPLER PLATE	1	mm	ALUMINUM 7050	
65	COUPLER PLATE	1	mm	ALUMINUM 7050	
66	COUPLER PLATE	1	mm	ALUMINUM 7050	
67	COUPLER PLATE	1	mm	ALUMINUM 7050	
68	COUPLER PLATE	1	mm	ALUMINUM 7050	
69	COUPLER PLATE	1	mm	ALUMINUM 7050	
70	COUPLER PLATE	1	mm	ALUMINUM 7050	
71	COUPLER PLATE	1	mm	ALUMINUM 7050	
72	COUPLER PLATE	1	mm	ALUMINUM 7050	
73	COUPLER PLATE	1	mm	ALUMINUM 7050	
74	COUPLER PLATE	1	mm	ALUMINUM 7050	
75	COUPLER PLATE	1	mm	ALUMINUM 7050	
76	COUPLER PLATE	1	mm	ALUMINUM 7050	
77	COUPLER PLATE	1	mm	ALUMINUM 7050	
78	COUPLER PLATE	1	mm	ALUMINUM 7050	
79	COUPLER PLATE	1	mm	ALUMINUM 7050	
80	COUPLER PLATE	1	mm	ALUMINUM 7050	
81	COUPLER PLATE	1	mm	ALUMINUM 7050	
82	COUPLER PLATE	1	mm	ALUMINUM 7050	
83	COUPLER PLATE	1	mm	ALUMINUM 7050	
84	COUPLER PLATE	1	mm	ALUMINUM 7050	
85	COUPLER PLATE	1	mm	ALUMINUM 7050	
86	COUPLER PLATE	1	mm	ALUMINUM 7050	
87	COUPLER PLATE	1	mm	ALUMINUM 7050	
88	COUPLER PLATE	1	mm	ALUMINUM 7050	
89	COUPLER PLATE	1	mm	ALUMINUM 7050	
90	COUPLER PLATE	1	mm	ALUMINUM 7050	
91	COUPLER PLATE	1	mm	ALUMINUM 7050	
92	COUPLER PLATE	1	mm	ALUMINUM 7050	
93	COUPLER PLATE	1	mm	ALUMINUM 7050	
94	COUPLER PLATE	1	mm	ALUMINUM 7050	
95	COUPLER PLATE	1	mm	ALUMINUM 7050	
96	COUPLER PLATE	1	mm	ALUMINUM 7050	
97	COUPLER PLATE	1	mm	ALUMINUM 7050	
98	COUPLER PLATE	1	mm	ALUMINUM 7050	
99	COUPLER PLATE	1	mm	ALUMINUM 7050	
100	COUPLER PLATE	1	mm	ALUMINUM 7050	



ERP/CRM

Export information to ERP/CRM software



The software knows the principals of mold design. From the customer specifications and part size, it makes a suggestion of the moldbase and components (size and location).

All the components (plates, leader pins, ejector pins, screws, cooling system, etc.) are "Smart", meaning that they know what is their function in the mold, they know how to behave according to the required mold changes at any stage of the mold design/production.

